



شركة الاستثمار الوطنية
NATIONAL INVESTMENTS COMPANY

Bursa Kuwait – Daily Market Report MENA Securities – Research & Studies Dep.

08th November 2022



www.nic.com.kw

DAILY MARKET COVERAGE REPORT

NIC MENA SECURITIES - RESEARCH AND STUDIES DEP



Kuwait Market Watch

Tuesday, November 8, 2022

Index	Close	DTD Chg Net	DTD (%)	YTD (%)	52W High	52W Low	MKT CAP Bn (KD)	PBV (X)	PE (X)	DY (%)
All Share Index	7,496.36	20.88	0.28%	6.43%	8,472.15	6,788.83	44.53	1.96	32.56	4.02
Premier Index	8,422.48	31.83	0.38%	10.25%	9,437.37	7,343.90	35.27	2.17	33.37	4.45
Main Index	5,534.32	-7.52	-0.14%	-5.98%	6,600.62	5,190.37	9.26	1.18	29.49	2.39
NIC 50 Index	9,437.24	39.60	0.42%	10.73%	10,553.82	8,195.69	34.57	2.17	33.37	4.45

Index	Value Mn(KD)	Volume (Mn share)
All Share Index	66.73	299.55
Premier Index	47.04	109.64
Main Index	19.69	189.91
NIC 50 Index	66.96	262.81

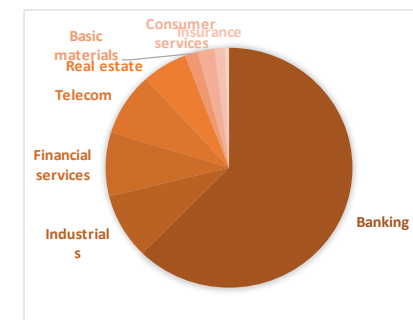
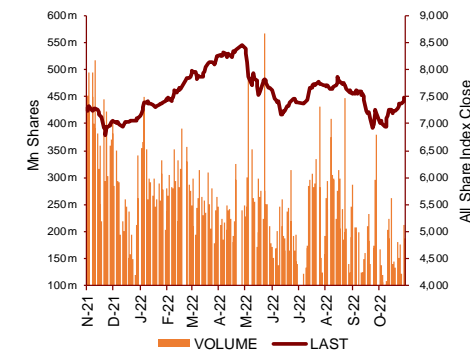
Market Breadth	UP ↑	Down ↓	No Chg ↔
All Share Index	77	42	34
Premier Index	16	6	3
Main Index	61	36	31
NIC 50 Index	34	12	4

Today's Top 5 Gainer %	Close KD	Value KD	DTD (%)
Asiya Capital Investments	0.049	519,458	10.48%
AL Safat Investment	0.106	1,050,110	8.16%
Jiyad Holding	0.026	409,708	7.41%
Future Kid Entertainment and R	0.125	53,570	5.93%
Kuwait Syrian Holding Co	0.036	2,255	5.88%

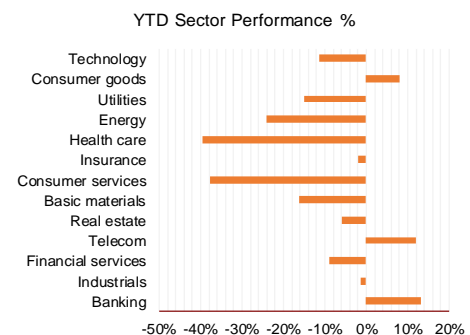
Today's Top 5 Loser %	Close KD	Value KD	DTD (%)
Al Deera Holding	0.160	716	-9.09%
Kuwait and Middle East Fin:	0.095	126,975	-5.94%
Hayat Communications	0.054	19,819	-5.45%
Educational Holding Group	2.300	65,531	-5.35%
United Projects for Aviation	0.219	2,138	-5.19%

Today's Top 5 by Value	Close KD	Trade Val Mn(KD)	DTD (%)
Kuwait Finance House	0.831	17.36	0.85%
National Bank of Kuwait	1.137	5.57	-0.18%
Aayan Leasing and Investment	0.138	4.30	4.55%
Kuwait International Bank	0.199	3.50	3.65%
GFH Financial Group	0.081	2.94	1.00%

Top 5 by Volume	Close KD	Trade Vol Mn(Shrs)	DTD (%)
GFH Financial Group	0.081	36.51	1.00%
Aayan Leasing and Investm	0.138	31.69	4.55%
Kuwait Finance House	0.831	20.94	0.85%
Kuwait International Bank	0.199	17.64	3.65%
Jiyad Holding	0.026	15.74	7.41%



Sector	Close	DTD Chg Net	DTD (%)	YTD (%)	52W High	52W Low	MKT CAP Bn (KD)	PBV (X)	PE (X)	DY (%)
Banking	1,841.35	3.670	0.20%	13.2%	1,992.2	1,557.8	27.413	1.67	25.34	1.82
Industrials	1,131.23	5.650	0.50%	-1.4%	1,443.6	976.3	3.863	1.00	28.26	3.87
Financial services	1,309.86	12.080	0.93%	-8.8%	1,678.3	1,190.4	3.767	1.02	37.56	2.87
Telecom	1,219.49	-0.900	-0.07%	12.0%	1,514.7	1,055.9	3.732	1.35	13.51	2.79
Real estate	1,255.11	6.240	0.50%	-5.8%	1,438.0	1,155.8	2.621	0.69	30.14	1.32
Basic materials	860.61	2.810	0.33%	-16.3%	1,233.3	800.8	0.750	1.22	9.01	6.23
Consumer services	458.15	2.430	0.53%	-37.7%	776.8	445.4	0.965	2.15	27.84	2.14
Insurance	1,497.57	-6.570	-0.44%	-1.9%	1,675.7	1,434.5	0.597	0.81	44.10	5.36
Health care	481.52	0.000	0.00%	-39.6%	821.7	420.4	0.239	15.79	13.02	1.00
Energy	1,077.15	-8.190	-0.75%	-24.0%	1,592.9	975.7	0.218	0.81	19.83	2.22
Utilities	513.16	2.630	0.52%	-14.9%	647.4	494.7	0.215	1.81	16.04	9.28
Consumer goods	1,456.83	11.210	0.78%	8.2%	1,641.0	1,208.7	0.139	0.93	36.78	2.18
Technology	614.01	8.730	1.44%	-11.5%	800.3	539.1	0.008	0.74	NM	-
	7,496.36	20.88	0.28%	6.4%	8,472.2	6,788.8	44.53	1.96	32.56	4.02



DAILY MARKET COVERAGE REPORT

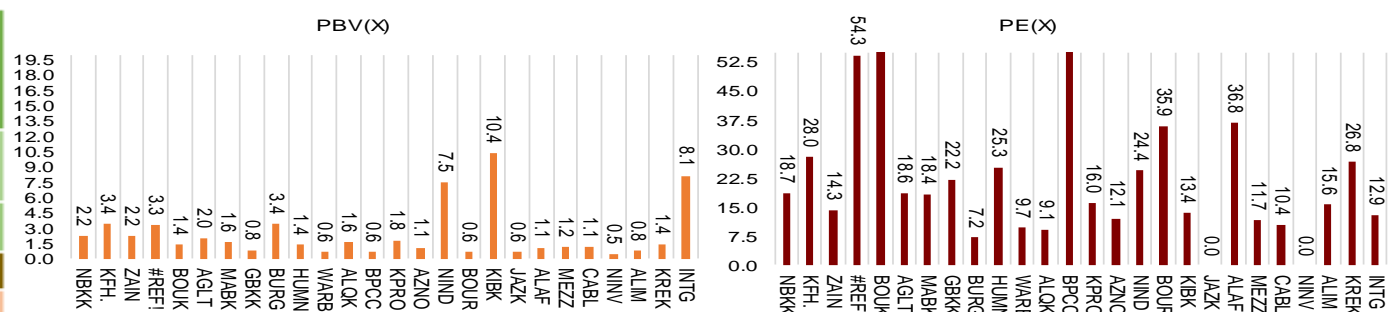
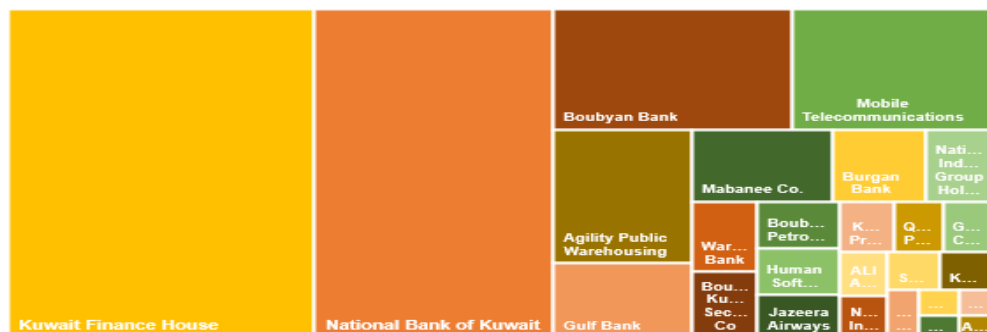
NIC MENA SECURITIES - RESEARCH AND STUDIES DEP



Premier Market

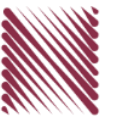
Tuesday, November 8, 2022

Premier Market	Price			Valuation Multiples			MKT Cap	Price Performance		Trading Indicators		ROE	ROA	52 Week (KD)		MKT Cap
	Close (KD)	Day Δ	Day % Δ	PBV(X)	PE(X)	DY%	Mn KD	MTD(%)	YTD (%)	Value (Mn KD)	(Mn Shrs)	(%)	(%)	High	Low	%
National Bank of Kuwait	1.137	-0.002	-0.18%	2.18	18.74	2.13	8,587	6%	20%	5.57	4.89	11.7%	1.5%	1.143	0.903	24.35%
Kuwait Finance House	0.831	0.007	0.85%	3.43	28.04	1.32	10,995	3%	10%	17.36	20.94	12.4%	1.6%	1.039	0.720	31.17%
Mobile Telecommunications	0.605	0.000	0.00%	2.20	14.30	5.45	2,618	1%	2%	2.36	3.90	15.6%	4.3%	0.698	0.564	7.42%
Boubyan Bank	0.834	0.000	0.00%	3.31	54.26	0.54	3,118	1%	17%	0.62	0.74	6.8%	0.8%	0.965	0.681	8.84%
Agility Public Warehousing	0.801	0.006	0.75%	1.37	61.52	2.10	2,023	2%	2%	2.44	3.04	2.7%	2.2%	1.062	0.634	5.74%
Mabane Co.	0.901	0.011	1.24%	1.99	18.65	1.48	1,119	3%	20%	0.45	0.50	11.1%	5.5%	0.910	0.717	3.17%
Gulf Bank	0.351	0.002	0.57%	1.60	18.43	1.91	1,123	2%	32%	2.07	5.89	8.9%	0.9%	0.385	0.230	3.18%
Burgan Bank	0.223	0.000	0.00%	0.81	22.17	2.14	732	2%	-7%	0.66	2.96	3.8%	0.7%	0.307	0.205	2.08%
Human Soft Holding	3.421	0.020	0.59%	3.44	7.21	11.76	416	2%	6%	0.15	0.04	49.6%	34.9%	3.704	3.006	1.18%
Warba Bank	0.251	0.002	0.80%	1.38	25.33	0.00	502	4%	-8%	1.70	6.79	5.8%	0.6%	0.298	0.216	1.42%
Qurain Petrochemical Industries	0.253	0.002	0.80%	0.62	9.68	7.17	272	0%	-27%	0.53	2.09	6.4%	5.2%	0.403	0.210	0.77%
Boubyan Petrochemical	0.802	0.001	0.12%	1.64	9.07	7.49	418	1%	-6%	0.25	0.31	19.1%	10.1%	1.125	0.769	1.19%
Kuwait Projects Company Holding	0.122	-0.001	-0.81%	0.64	312.82	4.07	298	3%	-14%	0.50	4.05	0.2%	0.1%	0.215	0.112	0.85%
Shamal Az-Zour Al-Oula Power & Water	0.195	0.001	0.52%	1.81	16.04	9.28	215	1%	-14%	0.11	0.56	14.8%	2.7%	0.246	0.188	0.61%
National Industries Group Holding	0.240	0.003	1.27%	1.06	12.09	4.69	516	3%	0%	1.85	7.76	5.3%	2.9%	0.314	0.207	1.46%
Boursa Kuwait Securities Co	2.349	0.021	0.90%	7.53	24.44	2.79	472	3%	16%	0.12	0.05	32.4%	22.9%	2.870	1.800	1.34%
Kuwait International Bank	0.199	0.007	3.65%	0.63	35.86	2.00	211	5%	-5%	3.50	17.64	1.7%	0.3%	0.259	0.186	0.60%
Jazeera Airways	1.757	-0.010	-0.57%	10.39	13.41	2.60	387	5%	36%	0.20	0.12	92.1%	11.6%	2.099	0.981	1.10%
Alafco Aviation Lease and Finance	0.166	-0.002	-1.19%	0.62	NM	0.00	158	-1%	-24%	0.59	3.51	-15.9%	-3.4%	0.256	0.162	0.45%
Mezzan Holding	0.359	-0.001	-0.28%	1.05	36.78	4.36	112	-1%	-38%	0.40	1.10	2.8%	1.3%	0.612	0.352	0.32%
Gulf Cable and Electrical Industries	1.267	0.028	2.26%	1.17	11.75	4.84	264	5%	45%	0.34	0.27	11.0%	NM	1.850	0.860	0.75%
National Investments	0.278	-0.002	-0.71%	1.10	10.39	16.07	222	16%	27%	0.87	3.04	10.9%	8.9%	0.475	0.201	0.63%
Alimtia Investment Group	0.077	0.000	0.13%	0.45	NM	11.78	78	3%	-35%	0.06	0.72	-0.9%	-0.4%	0.138	0.069	0.22%
Kuwait Real Estate	0.107	0.001	0.94%	0.78	15.64	2.75	99	-3%	-38%	1.21	11.42	4.9%	1.9%	0.187	0.097	0.28%
Integrated Holding	0.350	0.005	1.45%	1.44	26.76	2.90	89	7%	-5%	2.09	5.99	5.4%	3.4%	0.478	0.321	0.25%
ALI ALGanim	0.825	0.020	2.48%	8.11	12.94	5.91	229	4%	nm	1.07	1.31	27.8%	10.9%	0.966	0.750	0.65%
Total	31.83	0.38%	2.17	33.37	4.45	4.45	35,272	2.9%	10.3%	47.04	108.33					100%



DAILY MARKET COVERAGE REPORT

NIC MENA SECURITIES - RESEARCH AND STUDIES DEP



Premier Market Company	Price			Valuation Multiples			MKT Cap Mn KD	Price Performance		ROE (%)	ROA (%)
	Close (KD)	Day Δ	Day % Δ	PBV(X)	PE (X)	DY%		MTD (%)	YTD (%)		
National Bank of Kuwait	1.137	-0.002	-0.18%	2.18	18.7	2.13	8,587	5.8%	19.7%	11.7%	1.5%
Kuwait Finance House	0.831	0.007	0.85%	3.43	28.0	1.32	10,995	2.7%	9.9%	12.4%	1.6%
Mobile Telecommunications	0.605	0.000	0.00%	2.20	14.3	5.45	2,618	1.2%	1.7%	15.6%	4.3%
Boubyan Bank	0.834	0.000	0.00%	3.31	54.3	0.54	3,118	1.0%	17.1%	6.8%	0.8%
Agility Public Warehousing	0.801	0.006	0.75%	1.37	61.5	2.10	2,023	2.2%	1.7%	2.7%	2.2%
Mabaneer Co.	0.901	0.011	1.24%	1.99	18.6	1.48	1,119	3.3%	20.4%	11.1%	5.5%
Gulf Bank	0.351	0.002	0.57%	1.60	18.4	1.91	1,123	2.3%	32.1%	8.9%	0.9%
Burgan Bank	0.223	0.000	0.00%	0.81	22.2	2.14	732	2.3%	-6.7%	3.8%	0.7%
Human Soft Holding	3.421	0.020	0.59%	3.44	7.2	11.76	416	1.8%	6.1%	49.6%	34.9%
Warba Bank	0.251	0.002	0.80%	1.38	25.3	0.00	502	4.1%	-8.4%	5.8%	0.6%
Qurain Petrochemical Industries	0.253	0.002	0.80%	0.62	9.7	7.17	272	0.4%	-27.1%	6.4%	5.2%
Boubyan Petrochemical	0.802	0.001	0.12%	1.64	9.1	7.49	418	0.6%	-5.9%	19.1%	10.1%
Kuwait Projects Company Holding	0.122	-0.001	-0.81%	0.64	312.8	4.07	298	3.4%	-14.1%	0.2%	0.1%
Shamal Az-Zour Al-Oula Power & Water	0.195	0.001	0.52%	1.81	16.0	9.28	215	1.0%	-14.5%	14.8%	2.7%
National Industries Group Holding	0.240	0.003	1.27%	1.06	12.1	4.69	516	2.6%	-0.4%	5.3%	2.9%
Boursa Kuwait Securities Co	2.349	0.021	0.90%	7.53	24.4	2.79	472	3.4%	16.3%	32.4%	22.9%
Kuwait International Bank	0.199	0.007	3.65%	0.63	35.9	2.00	211	5.3%	-5.1%	1.7%	0.3%
Jazeera Airways	1.757	-0.010	-0.57%	10.39	13.4	2.60	387	5.1%	36.2%	92.1%	11.6%
Alafco Aviation Lease and Finance	0.166	-0.002	-1.19%	0.62	NM	0.00	158	-1.2%	-23.9%	-15.9%	-3.4%
Mezzan Holding	0.359	-0.001	-0.28%	1.05	36.8	4.36	112	-0.8%	-37.8%	2.8%	1.3%
Gulf Cable and Electrical Industries	1.267	0.028	2.26%	1.17	11.7	4.84	264	5.1%	45.5%	11.0%	9.0%
National Investments	0.278	-0.002	-0.71%	1.10	10.4	16.07	222	16.3%	26.9%	10.9%	8.9%
Alimtiq Investment Group	0.077	0.000	0.13%	0.45	NM	11.78	78	2.5%	-35.2%	-0.9%	-0.4%
Kuwait Real Estate	0.107	0.001	0.94%	0.78	15.6	2.75	99	-2.7%	-38.4%	4.9%	1.9%
Integrated Holding	0.350	0.005	1.45%	1.44	26.8	2.90	89	7.4%	-5.4%	5.4%	3.4%
ALI ALGanim	0.825	0.020	2.48%	3.81	12.9	5.91	229	3.8%	nm	27.8%	10.9%
Total		31.83	0.38%	2.17	33.37	4.45	35,043	2.9%	10.3%		

Discription	Close (KD)	Day Δ	Day % Δ	50 Day	200 Day	14 Day	Mn KD	MTD(%)	YTD (%)	High	Low
Premier Index	8,422	31.83	0.38%	8,215	8,460	84	35,043	2.9%	10.4%	9,437	7,344

Top 5 Performrs (Today's Price Change)

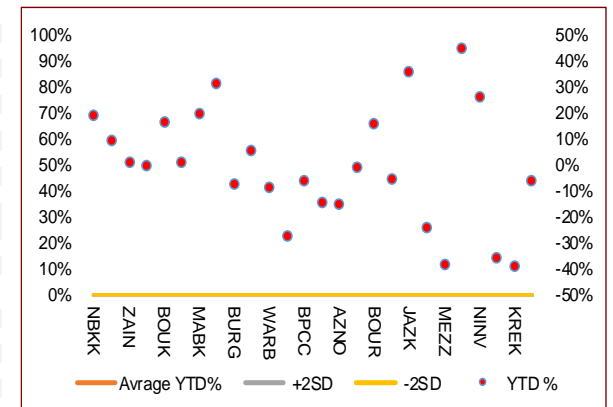
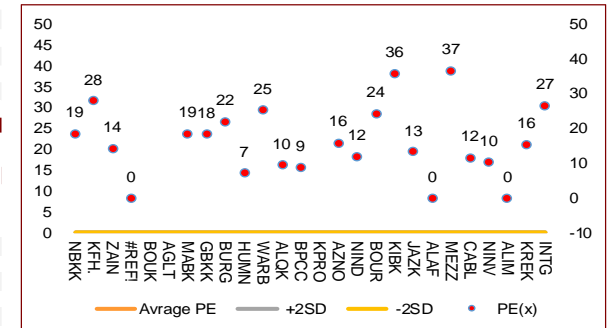
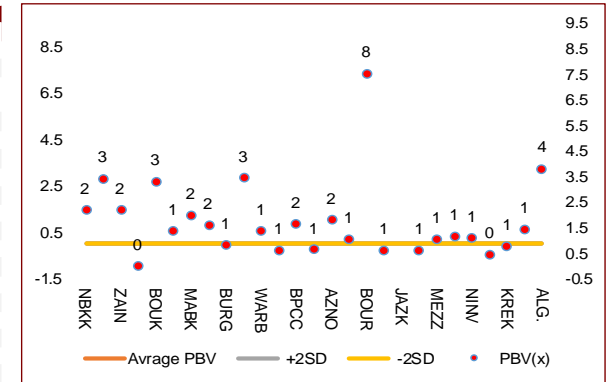
Kuwait International Bank	0.199	0.007	3.65%	0.201	0.218	70	211	5.3%	-5.1%	0.259	0.186
Gulf Cable and Electrical Industries	1.267	0.028	2.26%	1.225	1.340	91	264	5.1%	45.5%	1.850	0.860
Integrated Holding	0.350	0.005	1.45%	0.367	0.398	55	89	7.4%	-5.4%	0.478	0.321
National Industries Group Holding	0.240	0.003	1.27%	0.243	0.259	72	516	2.6%	-0.4%	0.314	0.207
Mabaneer Co.	0.901	0.011	1.24%	0.861	0.819	67	1,119	3.3%	20.4%	0.910	0.717

Middel Performrs (Today's Price Change)

Kuwait Real Estate	0.107	0.001	0.94%	0.111	0.143	46	99	-2.7%	-38.4%	0.187	0.097
Boursa Kuwait Securities Co	2.349	0.021	0.90%	2.240	2.379	67	472	3.4%	16.3%	2.870	1.800
Kuwait Finance House	0.831	0.007	0.85%	0.842	0.875	70	10,995	2.7%	9.9%	1.039	0.720
Warba Bank	0.251	0.002	0.80%	0.238	0.260	83	502	4.1%	-8.4%	0.298	0.216
Qurain Petrochemical Industries	0.253	0.002	0.80%	0.276	0.339	57	272	0.4%	-27.1%	0.403	0.210
Agility Public Warehousing	0.801	0.006	0.75%	0.753	0.855	76	2,023	2.2%	1.7%	1.062	0.634
Human Soft Holding	3.421	0.020	0.59%	3.337	3.322	79	416	1.8%	6.1%	3.704	3.006
Gulf Bank	0.351	0.002	0.57%	0.331	0.323	77	1,123	2.3%	32.1%	0.385	0.230
Shamal Az-Zour Al-Oula Power & Water	0.195	0.001	0.52%	0.196	0.210	64	215	1.0%	-14.5%	0.246	0.188
Alimtiq Investment Group	0.077	0.000	0.13%	0.100	0.100	59	78	2.5%	-35.2%	1.210	0.996
Boubyan Petrochemical	0.802	0.001	0.12%	0.843	0.935	51	418	0.6%	-5.9%	1.125	0.769
Ahli United Bank BSC	#N/A	#N/A	#N/A	0.305	0.288	50	#N/A	#N/A	#N/A	0.336	0.240
Boubyan Bank	0.834	0.000	0.00%	0.810	0.810	74	3,118	1.0%	17.1%	0.965	0.681
Burgan Bank	0.223	0.000	0.00%	0.227	0.252	73	732	2.3%	-6.7%	0.307	0.205

Bottom 5 Performrs (Today's Price Change)

National Bank of Kuwait	1.137	-0.002	-0.18%	1.040	1.040	90	8,587	5.8%	19.7%	1.143	0.903
Mezzan Holding	0.359	-0.001	-0.28%	0.386	0.484	36	112	-0.8%	-37.8%	0.612	0.352
National Investments	0.278	-0.002	-0.71%	0.255	0.315	86	222	16.3%	26.9%	0.475	0.201
Kuwait Projects Company Holding	0.122	-0.001	-0.81%	0.134	0.161	60	298	3.4%	-14.1%	0.215	0.112
Alafco Aviation Lease and Finance	0.166	-0.002	-1.19%	0.179	0.201	43	158	-1.2%	-23.9%	0.256	0.162



DAILY MARKET COVERAGE REPORT

NIC MENA SECURITIES - RESEARCH AND STUDIES DEP



Banking Sector																
Company	Price			Valuation Multiples			MKT Cap	Price Performance		Trading Indicators		ROE	ROA	52 Week (KD)		MKT Cap
	Close (KD)	Day Δ	Day % Δ	PBV(X)	PE(X)	DY%	Mn KD	MTD(%)	YTD (%)	Value (Mn KD)	(Mn Shrs)	(%)	(%)	High	Low	%
National Bank of Kuwait	1.137	-0.002	-0.18%	2.18	18.74	2.13	8,587	5.8%	19.7%	5.57	4.89	11.7%	1.5%	1.143	0.903	19.28%
Kuwait Finance House	0.831	0.007	0.85%	3.43	28.04	1.32	10,995	2.7%	9.9%	17.36	20.94	12.4%	1.6%	1.039	0.720	24.69%
Boubyan Bank	0.834	0.000	0.00%	3.31	54.26	0.54	3,118	1.0%	17.1%	0.62	0.74	6.8%	0.8%	0.965	0.681	7.00%
Commercial Bank of Kuwait	0.470	-0.016	-3.29%	1.11	11.71	4.12	931	-3.3%	-6.2%	0.00	0.00	9.9%	1.9%	0.549	0.456	2.09%
Gulf Bank	0.351	0.002	0.57%	1.60	18.43	1.91	1,123	2.3%	32.1%	2.07	5.89	8.9%	0.9%	0.385	0.230	2.52%
Burgan Bank	0.223	0.000	0.00%	0.81	22.17	2.14	732	2.3%	-6.7%	0.66	2.96	3.8%	0.7%	0.307	0.205	1.64%
Ahli United Bank	0.280	-0.001	-0.36%	0.95	24.69	1.69	631	5.2%	-4.9%	0.42	1.49	3.8%	0.8%	0.324	0.250	1.42%
Warba Bank	0.251	0.002	0.80%	1.38	25.33	0.00	502	4.1%	-8.4%	1.70	6.79	5.8%	0.6%	0.298	0.216	1.13%
Al Ahli Bank of Kuwait	0.329	0.000	0.00%	0.97	21.62	1.45	582	-0.6%	36.0%	0.68	2.08	4.5%	0.6%	0.355	0.216	1.31%
Kuwait International Bank	0.199	0.007	3.65%	0.63	35.86	2.00	211	5.3%	-5.1%	3.50	17.64	1.7%	0.3%	0.259	0.186	0.47%
Total Banking Sector - 10 Companies							27,413			32.58	63.42					61.56%
Basic Materials																
Company	Price			Valuation Multiples			MKT Cap	Price Performance		Trading Indicators		ROE	ROA	52 Week (KD)		MKT Cap
	Close (KD)	Day Δ	Day % Δ	PBV(X)	PE(X)	DY%	Mn KD	MTD(%)	YTD (%)	Value (Mn KD)	(Mn Shrs)	(%)	(%)	High	Low	%
Qurain Petrochemical Industries	0.253	0.002	0.80%	0.62	9.68	7.17	272	0.40%	-27.09%	0.53	2.09	6.4%	5.2%	0.403	0.210	0.61%
Boubyan Petrochemical	0.802	0.001	0.12%	1.64	9.07	7.49	418	0.63%	-5.87%	0.25	0.31	19.1%	10.1%	1.125	0.769	0.94%
Al Kout Industrial Projects	0.390	0.000	0.00%	1.40	4.93	10.26	39	0.00%	-21.37%	0.00	0.00	30.5%	20.1%	0.545	0.390	0.09%
Kuwait Foundry	0.290	-0.003	-1.02%	1.20	12.36	0.00	21	0.00%	-21.41%	0.00	0.00	10.7%	10.3%	0.424	0.260	0.05%
Total Basic Materials - 4 Companies							750			0.78	2.40					1.68%
Consumer Goods																
Company	Price			Valuation Multiples			MKT Cap	Price Performance		Trading Indicators		ROE	ROA	52 Week (KD)		MKT Cap
	Close (KD)	Day Δ	Day % Δ	PBV(X)	PE(X)	DY%	Mn KD	MTD(%)	YTD (%)	Value (Mn KD)	(Mn Shrs)	(%)	(%)	High	Low	%
Mezzan Holding	0.359	-0.001	-0.28%	1.05	36.78	4.36	112	-0.8%	-37.8%	0.40	1.10	2.8%	1.3%	0.612	0.352	0.25%
Livestock Transport and Trading	0.129	0.005	4.03%	0.80	NM	0.00	27	7.5%	-29.1%	0.00	0.01	-14.5%	-8.2%	0.196	0.112	0.06%
Total Consumer Goods - 2 Companies							139			0.40	1.11					0.31%
Consumer Services																
Company	Price			Valuation Multiples			MKT Cap	Price Performance		Trading Indicators		ROE	ROA	52 Week (KD)		MKT Cap
	Close (KD)	Day Δ	Day % Δ	PBV(X)	PE(X)	DY%	Mn KD	MTD(%)	YTD (%)	Value (Mn KD)	(Mn Shrs)	(%)	(%)	High	Low	%
Jazeera Airways	1.757	-0.010	-0.57%	10.39	13.41	2.60	387	5.1%	36.2%	0.20	0.12	92.1%	11.6%	2.099	0.981	0.87%
Kuwait National Cinema	0.979	0.039	4.15%	1.20	9.53	3.19	91	7.8%	11.0%	0.10	0.10	13.3%	6.1%	0.999	0.850	0.20%
Oula Fuel Marketing	0.147	-0.001	-0.68%	0.91	15.86	3.38	59	1.4%	-5.8%	0.01	0.09	5.6%	2.9%	0.171	0.140	0.13%
Al Soor Fuel Marketing	0.151	-0.001	-0.66%	0.89	19.26	3.29	61	1.3%	-2.6%	0.02	0.14	4.8%	3.6%	0.168	0.142	0.14%
Sultan Center Food Products	0.113	0.001	0.89%	0.65	0.90	0.00	32	1.8%	-46.2%	0.00	0.03	74.2%	12.2%	0.269	0.103	0.07%
Jiyad Holding	0.026	0.002	7.41%	0.30	NM	0.00	5	19.2%	-67.7%	0.41	15.74	-16.2%	-10.9%	0.099	0.015	0.01%
IFA Hotels and Resorts	0.026	0.000	0.00%	3.48	176.00	0.00	17	-2.2%	-50.7%	0.02	0.80	2.0%	0.4%	0.073	0.025	0.04%
Kuwait Resorts	0.081	0.002	2.68%	0.53	11.34	3.75	16	5.2%	-16.6%	0.05	0.61	4.8%	4.2%	0.108	0.067	0.04%
Future Kid Entertainment and Real Estate	0.125	0.007	5.93%	1.08	10.94	0.00	14	7.8%	58.8%	0.05	0.45	10.4%	4.7%	0.130	0.074	0.03%
Al Eid Food	0.246	-0.003	-1.20%	1.94	14.95	2.75	42	2.9%	6.6%	0.42	1.70	13.5%	10.1%	0.304	0.207	0.09%
Kuwait Hotels	0.170	0.000	0.00%	2.04	21.12	2.94	10	4.3%	142.9%	0.00	0.00	9.9%	6.4%	0.201	0.070	0.02%
Palms Agro Production	0.078	0.000	0.00%	0.79	NM	0.00	4	0.0%	14.4%	0.00	0.00	-13.8%	-10.9%	0.083	0.043	0.01%
ALI ALGanim	0.825	0.020	2.48%	3.81	12.94	5.91	229	3.8%	nm	1.07	1.31	27.8%	10.9%	0.966	0.750	0.51%
Total Consumer Services - 13 Companies							965			2.36	21.08					2.17%

DAILY MARKET COVERAGE REPORT

NIC MENA SECURITIES - RESEARCH AND STUDIES DEP



Financial Services	Price			Valuation Multiples			MKT Cap	Price Performance		Trading Indicators		ROE	ROA	52 Week (KD)		MKT Cap
	Company	Close (KD)	Day Δ	Day % Δ	PBV(X)	PE(X)		DY%	Mn KD	MTD(%)	YTD (%)			Value (Mn KD)	(Mn Shrs)	
Egypt Kuwait Holding	0.371	0.006	1.64%	2.20	5.96	5.85	418	-3.1%	-12.5%	0.03	0.08	37.1%	17.5%	0.465	0.353	0.94%
Kuwait Projects Company Holding	0.122	-0.001	-0.81%	0.64	312.82	4.07	298	3.4%	-14.1%	0.50	4.05	0.2%	0.1%	0.215	0.112	0.67%
National Industries Group Holding	0.240	0.003	1.27%	1.06	12.09	4.69	516	2.6%	-0.4%	1.85	7.76	5.3%	2.9%	0.314	0.207	1.16%
Boursa Kuwait Securities Co	2.349	0.021	0.90%	7.53	24.44	2.79	472	3.4%	16.3%	0.12	0.05	32.4%	22.9%	2.870	1.800	1.06%
GFH Financial Group	0.081	0.001	1.00%	0.89	9.55	4.55	280	3.5%	-18.0%	2.94	36.51	9.3%	1.2%	0.109	0.073	0.63%
National Investments	0.278	-0.002	-0.71%	1.10	10.39	16.07	222	16.3%	26.9%	0.87	3.04	10.9%	8.9%	0.475	0.201	0.50%
Tamdeen Investment	0.625	0.000	0.00%	0.72	16.16	1.60	213	13.6%	64.9%	0.00	0.00	4.9%	3.8%	0.625	0.309	0.48%
Alimtiqaz Investment Group	0.077	0.000	0.13%	0.45	NM	11.78	78	2.5%	-35.2%	0.06	0.72	-0.9%	-0.4%	0.138	0.069	0.18%
Commercial Facilities	0.175	0.002	1.16%	0.56	8.65	8.67	89	-0.6%	-15.0%	0.01	0.03	6.5%	3.6%	0.228	0.165	0.20%
Aayan Leasing and Investment	0.138	0.006	4.55%	1.02	13.07	0.00	92	7.8%	-16.6%	4.30	31.69	8.2%	6.0%	0.204	0.104	0.21%
Kuwait Investment	0.132	0.002	1.54%	0.63	7.65	19.23	72	0.0%	-53.0%	0.18	1.33	8.1%	4.6%	0.304	0.113	0.16%
Noor Financial Investment	0.183	0.002	1.10%	1.15	5.17	2.65	93	1.7%	-28.1%	0.05	0.25	22.0%	16.2%	0.308	0.163	0.21%
Arzan Financial Group for Financing and Investmei	0.126	-0.002	-1.56%	0.88	9.27	1.89	101	-4.5%	-19.0%	0.38	2.99	9.4%	7.0%	0.180	0.109	0.23%
Kuwait Financial Centre	0.110	0.001	0.92%	0.54	8.32	8.74	55	2.8%	-36.2%	0.04	0.34	6.9%	4.0%	0.197	0.101	0.12%
Gulf Investment House	0.396	0.012	3.13%	3.77	NM	0.00	161	-0.8%	32.0%	0.43	1.09	-3.0%	-2.0%	0.422	0.217	0.36%
Arabi Group Holdings	0.290	0.001	0.35%	1.73	NM	0.00	48	1.0%	-0.3%	0.16	0.54	-29.0%	-4.0%	0.499	0.169	0.11%
Kuwait and Middle East Financial Investment	0.095	-0.006	-5.94%	0.82	11.06	6.93	21	-28.6%	-36.7%	0.13	1.35	7.5%	5.2%	0.175	0.092	0.05%
Privatization Holding	0.036	0.001	1.99%	0.30	NM	0.00	22	-2.7%	-34.5%	0.03	0.92	-7.1%	-5.5%	0.068	0.032	0.05%
Asiya Capital Investments	0.049	0.005	10.48%	0.44	3.08	0.00	38	9.0%	-6.7%	0.52	11.29	15.5%	15.2%	0.071	0.037	0.08%
Umm Al Qaiwain General Investment Co	0.097	0.001	0.52%	0.57	4.97	5.19	35	3.2%	11.2%	0.00	0.02	12.0%	10.0%	0.108	0.086	0.08%
Securities House	0.060	0.002	2.93%	0.60	10.21	0.00	25	1.0%	-39.5%	0.06	1.01	5.8%	5.0%	0.112	0.052	0.06%
Kamco Investment	0.101	0.002	1.51%	0.56	5.83	10.05	35	2.0%	-21.7%	0.13	1.27	9.8%	4.6%	0.167	0.089	0.08%
First Investment	0.079	0.002	2.21%	0.69	112.14	0.00	35	4.9%	-6.8%	0.32	4.13	0.6%	0.7%	0.104	0.068	0.08%
Inovest BSC Public	0.082	0.003	3.41%	0.00	NM	0.00	24	6.0%	-30.6%	0.14	1.73	2.7%	1.7%	0.189	0.070	0.05%
Coast Investment and Development	0.075	0.000	0.00%	0.77	23.51	6.67	35	-2.6%	-28.6%	0.02	0.28	3.2%	3.1%	0.126	0.066	0.08%
Al Madar Investment	0.097	0.000	0.00%	0.92	56.73	0.00	20	-1.0%	-18.5%	0.00	0.00	1.6%	1.7%	0.123	0.083	0.05%
Bayan Investment	0.041	0.000	0.00%	0.31	NM	0.00	13	0.1%	-28.7%	0.00	0.00	-2.4%	-1.5%	0.071	0.036	0.03%
Al Manar Financing and Leasing	0.059	-0.003	-4.84%	0.58	19.22	0.00	16	-2.5%	-5.3%	0.01	0.12	2.9%	2.3%	0.079	0.049	0.03%
Manazel Holding	0.028	0.000	1.45%	0.61	9.59	0.00	12	2.6%	-45.3%	0.04	1.29	6.2%	2.0%	0.060	0.025	0.03%
Kuwait Finance and Investment	0.063	0.000	0.00%	0.47	27.39	0.00	19	0.0%	-27.4%	0.01	0.10	1.7%	1.6%	0.097	0.055	0.04%
National International Holding	0.104	-0.002	-1.89%	0.63	14.29	4.58	23	-5.5%	-29.5%	0.01	0.12	4.1%	2.8%	0.167	0.091	0.05%
Osoul Investment	0.087	-0.004	-4.29%	0.80	NM	11.65	11	-2.2%	6.4%	0.00	0.00	-4.4%	-4.0%	0.118	0.062	0.02%
UniCap Investment and Finance	0.053	0.001	2.30%	0.59	62.71	0.00	12	-4.0%	-22.2%	0.00	0.04	1.9%	0.2%	0.086	0.050	0.03%
Amar Finance and Leasing	0.063	0.000	0.00%	0.58	3.42	0.00	12	0.0%	-3.8%	0.00	0.02	18.6%	17.3%	0.082	0.058	0.03%
Gulf North Africa Holding	0.157	0.005	3.29%	1.72	59.40	0.00	20	6.1%	82.3%	0.14	0.92	3.0%	2.4%	0.141	0.057	0.04%
International Financial Advisors	0.089	0.000	0.11%	0.58	35.74	0.00	22	2.3%	-21.2%	0.09	1.03	1.9%	0.7%	0.127	0.082	0.05%
Credit Rating and Collection	0.016	0.000	1.97%	0.53	NM	0.00	3	-3.1%	-61.4%	0.00	0.03	-0.4%	-0.3%	0.069	0.014	0.01%
Ekttitab Holding	0.011	0.000	-0.90%	0.36	NM	0.00	4	2.8%	-48.4%	0.02	1.89	-16.8%	-12.9%	0.022	0.009	0.01%
Kuwait Syrian Holding Co	0.036	0.002	5.88%	0.35	5.81	0.00	6	5.9%	-15.9%	0.00	0.07	8.7%	6.2%	0.059	0.026	0.01%
Warba Capital Holding	0.083	0.002	2.47%	0.92	NM	0.00	8	-2.7%	-3.5%	0.00	0.00	-0.8%	-0.7%	0.119	0.070	0.02%
National Consumer Holding	0.118	0.004	3.51%	5.35	NM	0.00	35	6.3%	-1.6%	1.81	15.44	-8.0%	-7.5%	0.162	0.097	0.08%
Al Deera Holding	0.160	-0.016	-9.09%	1.07	8.06	0.00	15	-4.2%	-20.0%	0.00	0.00	12.5%	6.5%	0.200	0.145	0.03%
AL Safat Investment	0.106	0.008	8.16%	1.35	NM	0.00	30	7.7%	-13.0%	1.05	10.25	-1.8%	-1.6%	0.270	0.091	0.07%
Gulf Franchising Holding	0.090	0.000	0.00%	1.14	3.39	0.00	4	10.0%	-5.9%	0.00	0.00	40.5%	13.1%	0.148	0.063	0.01%
Total Financial Services - 44 Companies							3,763			16.43	143.81					8.45%

DAILY MARKET COVERAGE REPORT

NIC MENA SECURITIES - RESEARCH AND STUDIES DEP

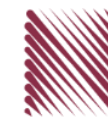


Health Care	Price			Valuation Multiples			MKT Cap	Price Performance		Trading Indicators		ROE	ROA	52 Week (KD)		MKT Cap
	Company	Close (KD)	Day Δ	Day % Δ	PBV(X)	PE(X)		DY%	Mn KD	MTD(%)	YTD (%)			Value (Mn KD)	(Mn Shrs)	
Al-Maidan Clinic for Oral Health Services	0.694	0.000	0.00%	2.75	15.27	0.00	156	-0.1%	-49.6%	0.00	0.00	19.4%	12.5%	1.400	0.556	0.35%
Advanced Technology	0.499	0.000	0.00%	1.11	10.78	3.01	75	0.0%	-3.7%	0.00	0.00	10.7%	2.1%	0.595	0.450	0.17%
Yiaco Medical	0.450	0.000	0.00%	43.51	NM	0.00	8	0.0%	2.7%	0.00	0.00	-161.7%	-4.7%	0.480	0.399	0.02%
Total Health Care - 3 Companies							239			0.00	0.00					0.54%

Industrials	Price			Valuation Multiples			MKT Cap	Price Performance		Trading Indicators		ROE	ROA	52 Week (KD)		MKT Cap
	Company	Close (KD)	Day Δ	Day % Δ	PBV(X)	PE(X)		DY%	Mn KD	MTD(%)	YTD (%)			Value (Mn KD)	(Mn Shrs)	
Agility Public Warehousing	0.801	0.006	0.75%	1.37	61.52	2.10	2,023	2.2%	1.7%	2.44	3.04	2.7%	2.2%	1.062	0.634	4.54%
Human Soft Holding	3.421	0.020	0.59%	3.44	7.21	11.76	416	1.8%	6.1%	0.15	0.04	49.6%	34.9%	3.704	3.006	0.93%
Alafco Aviation Lease and Finance	0.166	-0.002	-1.19%	0.62	NM	0.00	158	-1.2%	-23.9%	0.59	3.51	-15.9%	-3.4%	0.256	0.162	0.35%
Kuwait Cement	0.225	0.003	1.35%	0.83	159.57	2.25	160	6.6%	-2.6%	0.01	0.06	0.5%	0.3%	0.295	0.194	0.36%
Gulf Cable and Electrical Industries	1.267	0.028	2.26%	1.17	11.75	4.84	264	5.1%	45.5%	0.34	0.27	11.0%	9.0%	1.850	0.860	0.59%
Integrated Holding	0.350	0.005	1.45%	1.44	26.76	2.90	89	7.4%	-5.4%	2.09	5.99	5.4%	3.4%	0.478	0.321	0.20%
Kuwait Portland Cement	0.810	-0.016	-1.94%	1.14	16.95	8.47	81	-3.0%	-17.3%	0.01	0.01	6.8%	5.3%	1.240	0.751	0.18%
Educational Holding Group	2.300	-0.130	-5.35%	3.91	8.74	21.93	48	-6.1%	-42.5%	0.07	0.03	30.0%	17.2%	4.431	2.300	0.11%
United Projects for Aviation Services	0.219	-0.012	-5.19%	0.80	78.21	0.00	83	7.4%	-11.7%	0.00	0.01	1.0%	0.6%	0.318	0.182	0.19%
Heavy Engineering Industries and Shipbuilding	0.665	0.012	1.84%	1.78	21.97	3.06	120	6.4%	30.6%	0.27	0.42	8.2%	3.2%	0.960	0.442	0.27%
National Industries	0.190	0.000	0.00%	0.78	11.98	5.26	66	-0.5%	-1.6%	0.00	0.01	6.5%	4.7%	0.260	0.181	0.15%
ACICO Industries	0.092	0.000	-0.22%	0.41	NM	0.00	30	1.2%	-34.0%	0.13	1.46	-1.9%	-0.5%	0.208	0.076	0.07%
Kuwait Company for Process Plant Construction a	0.306	-0.013	-4.08%	1.23	19.83	7.76	36	-0.3%	-35.5%	0.02	0.07	6.1%	3.5%	0.522	0.286	0.08%
Ras Al Khaimah for White Cement and Constructi	0.143	0.002	1.42%	1.26	28.07	5.88	72	2.1%	13.5%	0.00	0.00	4.6%	3.7%	0.175	0.113	0.16%
Combined Group Contracting	0.410	-0.001	-0.24%	1.52	6.28	6.08	70	0.0%	15.8%	0.26	0.62	26.3%	5.8%	0.500	0.308	0.16%
Kuwait and Gulf Link Transport	0.058	0.001	0.87%	0.34	3.13	0.00	16	0.9%	-15.0%	0.02	0.27	11.6%	2.6%	0.093	0.054	0.04%
Shuaiba Industrial	0.150	0.003	2.04%	0.83	12.48	8.16	15	0.7%	-33.3%	0.00	0.01	6.6%	5.4%	0.310	0.137	0.03%
National Cleaning	0.036	0.001	1.98%	0.29	NM	0.00	8	-4.0%	-36.7%	0.00	0.09	-13.9%	-4.1%	0.072	0.031	0.02%
Fujairah Cement Industries	0.038	0.000	0.00%	0.21	NM	0.00	13	-1.8%	-30.2%	0.00	0.00	-12.7%	-6.3%	0.064	0.028	0.03%
Mubarrad Holding	0.083	0.002	2.22%	0.64	8.74	6.17	14	3.5%	-24.7%	0.04	0.45	7.3%	6.5%	0.125	0.071	0.03%
Specialities Group Holding	0.102	0.003	3.34%	0.54	11.09	6.89	16	11.0%	-17.9%	0.18	1.74	5.0%	3.6%	0.152	0.076	0.04%
Salbookh Trading	0.017	0.000	-2.33%	0.51	NM	0.00	2	-9.2%	-61.3%	0.00	0.08	-51.7%	-28.6%	0.061	0.016	0.00%
Metal and Recycling	0.097	0.004	4.19%	1.25	NM	0.00	9	7.4%	2.0%	0.00	0.00	-12.0%	-2.0%	0.116	0.060	0.02%
Equipment Holding	0.038	0.001	2.43%	0.61	NM	0.00	3	18.4%	-30.5%	0.00	0.00	-11.1%	-3.2%	0.075	0.030	0.01%
Jassim Transport & Stevedoring	0.330	0.000	0.00%	1.12	14.39	4.85	50	0.3%	-18.9%	0.01	0.12	8.0%	6.3%	0.410	0.300	0.11%
Total Industrials - 24 Companies							3,863			6.62	18.30					8.67%

DAILY MARKET COVERAGE REPORT

NIC MENA SECURITIES - RESEARCH AND STUDIES DEP



Insurance	Price			Valuation Multiples			MKT Cap	Price Performance		Trading Indicators		ROE	ROA	52 Week (KD)		MKT Cap
	Company	Close (KD)	Day Δ	Day % Δ	PBV(X)	PE(X)	DY%	Mn KD	MTD(%)	YTD (%)	Value (Mn KD)	(Mn Shrs)	(%)	(%)	High	Low
Gulf Insurance Group	0.970	0.000	0.00%	1.13	4.16	10.93	275	-1.5%	-9.3%	0.00	0.00	28.6%	5.5%	1.200	0.943	0.62%
Al Ahleia Insurance	0.491	-0.004	-0.81%	0.82	6.77	7.07	106	-3.5%	-2.8%	0.00	0.00	12.5%	4.4%	0.612	0.453	0.24%
Kuwait Insurance	0.495	-0.015	-2.94%	0.75	7.67	6.47	91	0.2%	27.9%	0.03	0.07	10.4%	6.1%	0.533	0.379	0.21%
Kuwait Reinsurance	0.272	0.000	0.00%	0.98	9.61	1.69	65	-4.9%	7.8%	0.00	0.00	10.8%	3.4%	0.373	0.217	0.15%
Bahrain Kuwait Insurance	0.191	0.000	0.00%	1.33	11.98	8.44	29	0.0%	0.0%	0.00	0.00	11.0%	2.1%	0.191	0.191	0.06%
Warba Insurance and Reinsurance	0.127	0.006	4.96%	0.54	8.83	8.26	21	0.8%	-20.1%	0.00	0.03	6.2%	2.1%	0.165	0.119	0.05%
First Takaful Insurance	0.046	0.000	0.00%	0.60	284.38	0.00	5	0.0%	-9.0%	0.00	0.00	0.2%	0.1%	0.075	0.034	0.01%
Wethaq Takaful Insurance	0.037	0.000	0.00%	0.33	19.37	0.00	4	0.0%	-27.3%	0.00	0.00	1.7%	1.7%	0.075	0.024	0.01%
Total Insurance - 8 Companies							597			0.04	0.10					1.34%

Energy	Price			Valuation Multipels			MKT Cap	Price Performance		Trading Indicators		ROE	ROA	52 Week (KD)		MKT Cap
	Company	Close (KD)	Day Δ	Day % Δ	PBV(X)	PE(X)	DY%	Mn KD	MTD(%)	YTD (%)	Value (Mn KD)	(Mn Shrs)	(%)	(%)	High	Low
National Petroleum Services	0.696	-0.023	-3.20%	1.76	12.48	4.87	68	-0.1%	-15.1%	0.00	0.01	14.5%	11.6%	0.868	0.625	0.15%
Independent Petroleum Group	0.487	-0.002	-0.41%	0.85	12.30	6.13	88	13.3%	-17.2%	0.05	0.10	7.1%	1.5%	0.612	0.368	0.20%
Burgan for Well Drilling Trading and Maintenance	0.118	0.001	0.85%	0.43	9.90	2.33	31	2.6%	-11.7%	0.00	0.04	4.4%	1.4%	0.161	0.094	0.07%
Energy House Holding	0.023	0.001	4.59%	0.83	NM	0.00	17	5.1%	-63.9%	0.03	1.34	-1.4%	-2.5%	0.086	0.019	0.04%
Gulf Petroleum Investment	0.016	0.000	1.95%	0.22	NM	0.00	7	-1.9%	-35.9%	0.02	1.49	-4.0%	-2.6%	0.031	0.013	0.02%
Senergy Holding	0.038	-0.001	-2.60%	0.75	44.64	0.00	7	-3.6%	-23.5%	0.00	0.12	1.7%	1.4%	0.060	0.035	0.02%
Total Energy - 6 Companies							218			0.11	3.08					0.49%

DAILY MARKET COVERAGE REPORT

NIC MENA SECURITIES - RESEARCH AND STUDIES DEP



Real Estate	Price		Valuation Multiples					MKT Cap	Performance		Trading Indicators		ROE	ROA	2 Week (KD)		MKT Cap
Company	Close (KD)	Day Δ	Day % Δ	PBV(X)	PE(X)	DY%	Mn KD	MTD(%)	YTD (%)	Value (Mn KD)	(Mn Shrs)	(%)	(%)	High	Low	%	
Mabane Co.	0.901	0.011	1.24%	1.99	18.65	1.48	1,119	3.3%	20.4%	0.45	0.50	11.1%	5.5%	0.910	0.717	2.51%	
Salhia Real Estate	0.482	0.003	0.63%	1.60	20.36	2.98	248	3.4%	-4.3%	0.49	1.02	7.9%	3.2%	0.569	0.428	0.56%	
Commercial Real Estate	0.099	0.001	0.51%	0.60	10.17	5.08	174	-0.5%	-20.8%	0.69	6.98	6.2%	3.3%	0.140	0.094	0.39%	
National Real Estate	0.138	-0.002	-1.43%	0.77	1.25	0.00	256	-1.4%	-25.1%	0.62	4.47	64.5%	38.6%	0.212	0.125	0.58%	
Tamdeen Real Estate	0.380	0.000	0.00%	0.74	8.75	2.63	153	2.7%	12.1%	0.00	0.00	9.2%	3.9%	0.380	0.296	0.34%	
Kuwait Real Estate	0.107	0.001	0.94%	0.78	15.64	2.75	99	-2.7%	-38.4%	1.21	11.42	4.9%	1.9%	0.187	0.097	0.22%	
United Real Estate	0.073	-0.004	-4.97%	0.45	105.22	0.00	78	1.5%	-3.7%	0.03	0.38	0.4%	-0.1%	0.121	0.064	0.18%	
First Dubai for Real Estate Development	0.053	0.001	1.93%	0.50	24.40	0.00	39	5.6%	-49.9%	0.02	0.37	2.1%	1.7%	0.118	0.044	0.09%	
Al Mazaya Holding	0.050	0.000	0.80%	0.50	37.67	0.00	32	1.2%	-34.5%	0.08	1.67	1.3%	0.7%	0.086	0.043	0.07%	
Ajial Real Estate Entertainment	0.288	0.005	1.77%	0.42	18.96	1.77	56	5.5%	-5.3%	0.00	0.00	2.2%	1.8%	0.344	0.268	0.13%	
Injazzat Real Estate Development	0.080	0.001	0.63%	0.47	6.39	6.29	27	3.5%	-20.0%	0.03	0.32	7.5%	3.9%	0.114	0.070	0.06%	
Munshaat Real Estate Projects	0.063	0.000	0.00%	1.88	5.19	0.00	20	4.3%	-12.4%	0.00	0.00	42.9%	4.5%	0.076	0.052	0.05%	
Aayan Real Estate	0.072	0.003	4.79%	0.51	23.52	0.00	30	7.8%	-18.4%	0.06	0.91	2.2%	2.3%	0.102	0.056	0.07%	
Al Argan International Real Estate	0.097	0.000	0.00%	0.32	35.64	0.00	25	11.2%	-16.8%	0.00	0.01	0.9%	0.3%	0.144	0.073	0.06%	
Al-Enmaa Real Estate	0.060	-0.001	-1.16%	0.65	NM	0.00	27	0.5%	-20.1%	0.14	2.33	-5.9%	NM	0.088	0.050	0.06%	
Arkan Al Kuwait Real Estate	0.119	0.000	0.00%	0.84	11.60	5.04	30	-4.0%	-4.0%	0.00	0.00	7.4%	2.3%	0.150	0.113	0.07%	
Kuwait Business Town Real Estate	0.059	-0.001	-2.34%	0.73	16.30	0.00	34	-0.2%	-28.1%	0.01	0.20	3.8%	2.8%	0.094	0.046	0.08%	
Dalqan Real Estate	0.210	-0.001	-0.47%	1.88	194.44	0.00	13	1.4%	-3.2%	0.01	0.07	1.0%	1.0%	0.264	0.195	0.03%	
Sokouk Holding	0.024	0.001	4.74%	0.57	NM	0.00	14	-1.6%	-25.5%	0.01	0.43	-2.9%	-1.7%	0.036	0.020	0.03%	
Tijara and Realestate Investment	0.056	0.001	2.38%	0.50	8.51	5.48	21	3.7%	-8.3%	0.07	1.23	6.0%	3.3%	0.089	0.044	0.05%	
Al-Arabiya Real Estate	0.030	0.001	2.77%	0.36	NM	0.00	15	1.7%	-29.1%	0.13	4.59	-23.1%	-7.3%	0.050	0.026	0.03%	
Aqar Real Estate Investments	0.058	0.000	0.00%	0.48	18.53	5.75	14	3.8%	-26.4%	0.00	0.00	2.6%	2.1%	0.092	0.052	0.03%	
Mashaer Holding	0.054	0.001	2.64%	0.64	NM	0.00	10	-0.7%	-22.2%	0.01	0.17	-6.5%	-3.2%	0.084	0.049	0.02%	
Dar Al Thuraya Real Estate	0.170	0.000	0.00%	1.47	25.07	0.00	25	0.0%	61.9%	0.00	0.00	6.0%	5.3%	0.172	0.092	0.06%	
Osos Holding Group	0.105	0.000	0.00%	0.93	9.15	9.52	11	-4.5%	0.0%	0.00	0.02	10.2%	6.5%	0.147	0.094	0.02%	
Al Massaleh Real Estate	0.036	0.000	0.00%	0.59	NM	0.00	8	1.7%	-31.7%	0.00	0.00	-15.4%	-3.2%	0.058	0.030	0.02%	
Kuwait Remal Real Estate	0.009	0.000	1.18%	1.10	NM	0.00	3	7.5%	-55.0%	0.01	1.64	-110.3%	-12.4%	0.024	0.007	0.01%	
Kuwait Real Estate Holding	0.032	0.000	-0.62%	0.60	11.63	0.00	6	-5.6%	-39.2%	0.02	0.48	5.1%	1.7%	0.059	0.032	0.01%	
Taameer Real Estate Investment	0.024	-0.001	-4.47%	0.37	NM	0.00	5	-1.3%	-43.1%	0.01	0.58	-6.5%	-4.9%	0.054	0.018	0.01%	
Sanam Real Estate	0.065	0.000	0.15%	0.86	72.81	0.00	8	0.0%	-17.9%	0.00	0.05	1.2%	1.0%	0.100	0.053	0.02%	
Mena Real Estate	0.029	0.000	-0.34%	0.26	NM	0.00	4	0.0%	-42.2%	0.01	0.24	-6.8%	-5.4%	0.098	0.028	0.01%	
Al Masaken International Real Estate Developmen	0.027	0.001	2.28%	0.43	NM	0.00	3	-5.6%	-38.7%	0.00	0.01	-1.1%	-0.4%	0.057	0.026	0.01%	
Real Estate Trade Centers	0.056	0.000	-0.71%	0.31	23.43	0.00	8	9.2%	-20.0%	0.00	0.06	1.3%	1.1%	0.123	0.043	0.02%	
Land United Real Estate	0.068	0.000	0.00%	0.60	NM	0.00	10	0.0%	-27.6%	0.00	0.00	-4.8%	-1.5%	0.118	0.052	0.02%	
Total Real Estate - 34 Companies							2,621			4.13	40.17					5.89%	

DAILY MARKET COVERAGE REPORT

NIC MENA SECURITIES - RESEARCH AND STUDIES DEP



Technology	Price			Valuation Multiples			MKT Cap	Price Performance		Trading Indicators		ROE	ROA	52 Week (KD)		MKT Cap
	Close (KD)	Day Δ	Day % Δ	PBV(X)	PE(X)	DY%		Mn KD	MTD(%)	YTD (%)	Value (Mn KD)			(Mn Shrs)	(%)	
Automated Systems	0.084	0.001	1.44%	0.74	NM	0.00	8	0.7%	-10.2%	0.00	0.01	-3.4%	-3.0%	0.110	0.074	0.02%
Total Technology - 1 Companies				0.74	NM	0.0%	8			0.00	0.01	-3.40%	-2.96%			0.02%

Telecom	Price			Valuation Multiples			MKT Cap	Price Performance		Trading Indicators		ROE	ROA	52 Week (KD)		MKT Cap
	Company	Close (KD)	Day Δ	Day % Δ	PBV(X)	PE(X)		DY%	Mn KD	MTD(%)	YTD (%)			Value (Mn KD)	(Mn Shrs)	
Mobile Telecommunications	0.605	0.000	0.00%	2.20	14.30	5.45	2,618	1.2%	1.7%	2.36	3.90	15.6%	4.3%	0.698	0.564	5.88%
Kuwait Telecommunications	0.590	-0.003	-0.51%	2.54	12.99	5.06	589	0.0%	38.0%	0.79	1.33	20.3%	11.1%	1.189	0.418	1.32%
National Mobile Telecommunications	1.020	0.001	0.10%	0.96	13.24	3.43	511	-0.5%	63.5%	0.03	0.03	7.2%	4.2%	1.280	0.615	1.15%
AAN Digital Services	0.016	0.000	0.00%	0.60	NM	0.00	14	0.0%	-2.4%	0.00	0.00	NM	NM	0.020	0.016	0.03%
Hayat Communications	0.054	-0.003	-5.45%	0.43	NM	0.00	5	-8.8%	-49.2%	0.02	0.37	-0.7%	-0.3%	0.124	0.050	0.01%
Telecom - 5 Companies							3,737			3.19	5.62					8.39%

Utilities	Price			Valuation Multiples			MKT Cap	Price Performance		Trading Indicators		ROE	ROA	52 Week (KD)		MKT Cap
	Company	Close (KD)	Day Δ	Day % Δ	PBV(X)	PE(X)		DY%	Mn KD	MTD(%)	YTD (%)			Value (Mn KD)	(Mn Shrs)	
Shamal Az-Zour Al-Oula Power & Water	0.195	0.001	0.52%	1.81	16.04	9.28	215	1.0%	-14.5%	0.11	0.56	14.8%	2.7%	0.246	0.188	0.48%
Total Utilities - 1 Companies							215			0.11	0.56					0.48%

Total Market 156 Companies				1.96	32.56	4.02	44,527			66.73	299.55					100%
-----------------------------------	--	--	--	-------------	--------------	-------------	---------------	--	--	--------------	---------------	--	--	--	--	-------------

End of Report

The information contained in this document is proprietary to NIC and is for use only by the persons to whom it is issued. This document is confidential and may not be distributed either in part or in whole without the express agreement of NIC. It is intended solely for the use of the individual or entity to whom it is addressed and others authorized to receive it.

Note : ROE and ROA is calculated based on LFY net profit & shareholders' equity and LFY Operating Profits & Total Assets

Sources : National Investments Company Research and Studies Departments, Boursa, Refinitiv.



شركة الاستثمار الوطنية
NATIONAL INVESTMENTS COMPANY

Sharq, Al Mutanabi Street, Khaleejia Tower | P.O. Box 25667, Safat 13117, Kuwait

T.: +965 2226 6666 | Fax: +965 2226 6793 | www.nic.com.kw